

Paab Thawjcoj Ntawm Pawg Namtsev Teg Dlejnum

PHAAJ V. PAWG NAMTSEV LUB CEV

Feem 1. Cov Thawjcoj/Cov Tuav Dlejnum Tej Phaab.

A. Paab Thawjcoj.

(Saib lawle tej pawg namtsev kevcai tswjfw)

1. **Thawj Namtsev (Director).** Tug thawj namtsev yog tug kws saib hab leg cov homphaj dlejnum ntawm pawg namtsev kuas tav hab txhawb tej kws tau pumzoo yuav ua. Nwg yog tug tswj rooj saablaaj ntawm pawg namtsev hab rooj saablaaj ntawm cov tsaavxwm namtsev.

Nwg yog tug:

- *Cob dlejnum rua cov tsaavxwm, cov tuav dlejnum tej phaab hab tej paab kaavxwm.*
- *Ua kevcai togtxais cov tswvcuab tshab ntawm pawg namtsev.*
- *Tshaabxu txwmxyoo rua pawg namtsev, pawgntseeg hab Koomhum Namtsev (KHN).*
- *Tshaabxu cov tsaavxwm tshab moog rua KHN.*
- *Taug qaab cov tsaavxwm pawg namtsev, cov tuav dlejnum tej phaab hab tej paab kaavxwm saib cov dlejnum kws nwg lossis lub rooj tsaavxwm tso rua puab ua txug twg, lossis ua tav lecaag lawm.*

2. **Lwm Thawj Namtsev [Assistant Director (yog hastas muaj)].** Tug lwm thawj namtsev yog tug tswj txhua lub rooj saablaaj thaus tug thawj namtsev muaj chaw taabkaum hab ua tej dlejnum kws thawj namtsev tsocai rua nwg ua. Nwg yuav tau ua dlejnum lawle lub rooj tsaavxwm pumzoo rua nwg ua kuas tav. Yog hastas tug thawj namtsev su nwg teg dlejnum lossis taag simneej, tug lwm thawj namtsev yog tug lug tuav lub meejmom thawj namtsev moog txug thaus kws xaiv lossis taw dlua tug thawj namtsev.

3. **Teevntawv (Secretary).** Tug teevntawv yuavtsum tau khaws tej ntaub ntawv teev kev saablaaj txhua zag ntawm pawg namtsev, ntawm paab thawjcoj hab paab tsaavxwm namtsev. Nwg yuavtsum ua dlejnum sau ntaub ntawv moog lug lawle lub rooj tsaavxwm pumzoo rua nwg ua.

Nwg yog tug:

- *Teev txhua yaam lug thaus paab thawjcoj lossis lub rooj tsaavxwm saablaaj txhua zag hab thaus has dlejnum rua lub sijhawm pawg namtsev muaj kev sis txoos uake. Muab cov lug kws nwg teev tseg ntawd koj moog ntaus; muab rua tug thawj namtsev saib ua ntej, thawj namtsev hab nwg suam npe rua maam le koj moog luam hab muab faib rua paab thawjcoj, paab tsaavxwm txhua tug lossis cov namtsev.*
- *Ua cov ntawv tshaabxu dlejnum rua pawg namtsev, cov ntawv tshaabxu txwmxyoo rua pawgntseeg hab KHN. Yuav tau muab cov ntawv tshaabxu nuav rua thawj namtsev saib ua ntej kws xaa tawm moog lossis ua ntej luam faib rua cov namtsev.*

- *Teev cov namtsev kws tuaj koom namtsev kev sis txoos/ntsib uake npe txhua zag lawvle lub rooj tsaavxwm pumzoo. Suav cov namtsev saib tuaj pistsawg leej txhua zag kws pawg namtsev muaj moog thov Vaajtswv, moog saib cov namtsev lossis moog ua tej yaam dlejnum kws pawg namtsev npaaj muaj.*
- *Ua dlejnum lawvle lub rooj tsaavxwm pumzoo lossis thawj namtsev tsocai rua ua.*

4. **Canyaj (Treasurer).** Tug canyaj yuavtsum khaws taagnrho tej ntaub ntawv kws tee txug nyajtxag kuas meej. Txhua dlaim ntawv povthawj (receipt) siv nyaj hab ntxiv nyaj rov qaab rua kev siv, hab txhua yaam kev siv nyaj lawvle lub rooj tsaavxwm pumzoo lossis tau tsocai lawm.

Nwg yog tug:

- *Ua cov ntawv tshaabxu nyajtxag rua pawg namtsev, cov ntawv tshaabxu nyajtxag txwmxyoo rua pawgntseeg hab KHN. Yuav tau muab cov ntawv tshaabxu nuav rua thawj namtsev saib ua ntej kws xaa tawm moog lossis ua ntej luam faib rua cov namtsev.*
- *Xaa pawg namtsev cov nyaj moog rua KHN, Koomhum Namtsev Qebsab (KHNQS) hab lwm tug lawvle hom nyaj ntawd hab lawvle lub sijhawm teem tseg.*
- *Ua dlejnum lawvle lub rooj tsaavxwm pumzoo lossis lawvle thawj namtsev tsocai rua ua.*

Ceebtoom: *Tsi has pawg namtsev coob lossis tsawg, yog pawg namtsev pumzoo hastas yuav siv tuab tug tuabneeg lug tuav ob lub meeimom, kws yog leg tug Teevntawv hab tug Canyaj cov dlejnum tuabsi los tau.*

5. **Tsaavxwm [Member-at-Large (yog hastas muaj)].** Tug tsaavxwm (tuavxaam) nuav yog ib tug Tsaavxwm ntawm pawg namtsev hab ua dlejnum lawvle paab tsaavxwm pawg namtsev pumzoo.

B. Cov Tuav Dlejnum Tej Phaab (Coordinator).
(Saib lawvle tej pawg namtsev kevcai tswjfwv)

Txhua tug tuav dlejnum ntawm tej phaab huv pawg namtsev yog tsaavxwm ntawm pawg namtsev. Puab yuavtsum moog koom lub rooj saablaaj ntawm cov tsaavxwm txhua zag.

1. **Sis Txoos Uake (Fellowship).** Tug saib kev sis txoos uake yog tug txhawb kuas cov namtsev ca Tswv Yexus Khetos lub fwjchim muab puab hloov lug ua ib cov namtsev kws muaj kev sis txheeb, sis raug zoo nyob taug uake.

Nwg yog tug:

- *Rhawv hab nrhav kuas muaj kev luj hluv, sis hluv, sis paab, sis raug zoo nruab nraab ntawm cov namtsev huv pawgntseeg kuas zoo tshaaj qub.*
- *Rhawv kuas muaj kev txhawb zug rua cov namtsev kws muaj kev nyuaj sab hab qaug zug.*
- *Ua komtswj rua pawg namtsev kev sis txoos/ntsib uake hab nrhav tuabneeg paab leg dlejnum.*

- *Npaaj nkauj hab qha nkauj rua cov namtsev lub limtam kws pawg namtsev muaj kawm nkauj hab txhua zag kws pawg namtsev yuav muaj hu nkauj tshwjxeeb lossis hu rua tej yaam tshwjxeeb.*
- *Ua dlejnum lawvle lub rooj tsaavxwm pumzoo lossis lawvle thawj namtsev tsocai rua ua.*

2. **Cobqha Thwjt看 (Discipleship).** Tug saib kev cobqha thwjt看 yog tug txhawb kuas cov namtsev kawm Vaajtswv Txujlug hab kuas puab txawj ca Vaaj Ntsujplig tug Dlawbhuv lub fwjchim coj puab caum Tswv Yexus qaab.

Nwg yog tug:

- *Rhawv kuas muaj kev qha (mentor), lossis coj lwm tug namtsev kuas paub Vaajtswv.*
- *Rhawv kuas muaj kev kawm Vaajlugkub, lossis kev npaaj cuabyeej lug ntawm Vaajtswv txujlug kuas cov namtsev ua tau timkhawv.*
- *Ua dlejnum lawvle lub rooj tsaavxwm pumzoo lossis lawvle thawj namtsev tsocai rua ua.*

3. **Tshaajtawm (Outreach).** Tug saib kev tshaajtawm yog tug txhawb kuas cov namtsev txawj coj Vaajtswv txujkev hluv hab txujmoo zoo moog qha rua puab tsev tuabneeg, puab cov phoojywg hab puab cov kwvtij zej zog.

Nwg yog tug:

- *Rhawv kuas muaj kev ncaav cuag hab txhawb cov namtsev huv lub zej zog kws yog ib txhais yim neej, cov tsi txhua tuaj koom namtsev, cov muaj mob, hab cov laug kuas paub Vaajtswv txuj kev hluv, kev cawmdlim. Hab nrhav sijhawm moog qha txug peb kev ntseeg.*
- *Ua dlejnum lawvle lub rooj tsaavxwm pumzoo lossis lawvle thawj namtsev tsocai rua ua.*

4. **Xaa Moo Zoo (Mission).** Tug saib kev xaa moo zoo yog tug txhawb hab coj cov namtsev kuas koomteg nrug C&MA ua Vaajtswv teg dlejnum thoob plawg qaabntuj, lug ntawm txujkev thov Vaajtswv, moog xaa txujmoo zoo, txhawb cov tub xaa moo zoo hab puab tsev tuabneeg kws nyob txawv tebchaws, hab txhawb lub homphaj nyaj kws Koomhum Namtsev Qebsab (KHNQS) naj xyoo npaaj xaa txujmoo zoo moog rua ntau lub tebchaws.

Nwg yog tug:

- *Rhawv kuas muaj kev kawm rua cov namtsev kuas paub txug kev xaa moo zoo, tsi has nyob rua huv yug lub zej zog lossis txawv tebchaws hab thoob qaabntuj.*
- *Rhawv kuas muaj kev txhawb kev xaa moo zoo lug ntawm kev paab nyajtxag, khoom siv hab kev thov Vaajtswv.*
- *Rhawv kuas muaj kev txhawb pawgntseeg, KHN, hab KHNQS txug namtsev tej homphaj dlejnum.*
- *Ua dlejnum lawvle lub rooj tsaavxwm pumzoo lossis lawvle thawj namtsev tsocai rua ua.*

Ceebtoom: Tsi has pawg namtsev coob lossis tsawg, yog pawg namtsev pumzoo hastas yuav siv tuab tug tuabneeg lug tuav ob lub meejmom, kws yog leg tug saib Kev Tshaajtawm hab tug saib Kev Xaa Moo Zoo cov dlejnum tuabsi los tau.

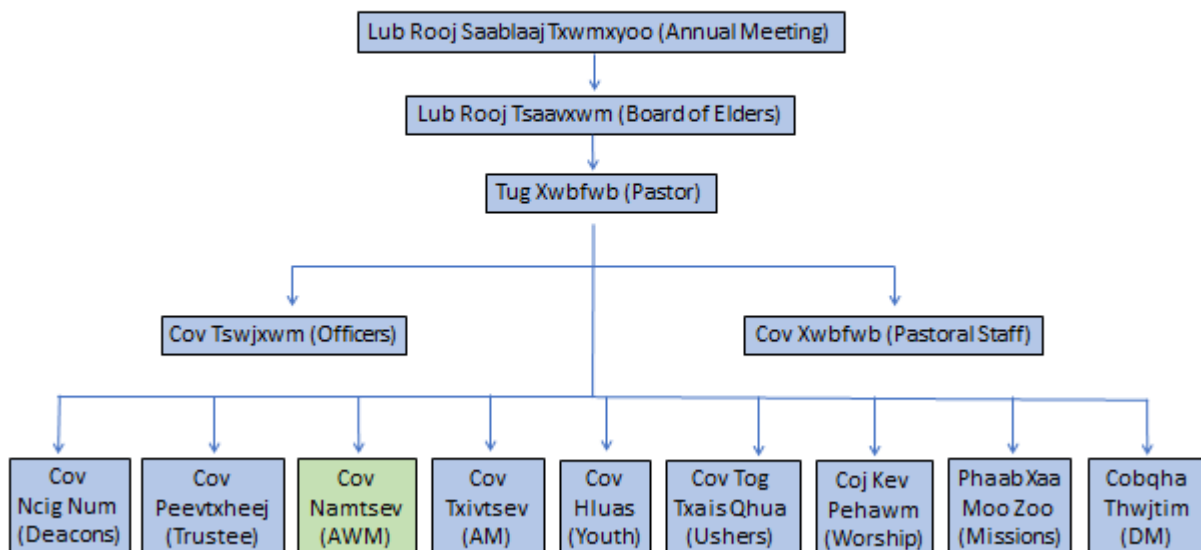
5. **Thov Vaajtswv (Prayer).** Tug saib kev thov Vaajtswv yog tug txhawb kuas cov namtsev tuaj sis txoos uake thov Vaajtswv, hab kuas puab nyag muaj kev pehawm Vaajtswv ntawm nyag lub neej hab thov Vaajtswv rua kev ua Vaajtswv dlejnum huv zej zog, huv tebchaws nuav hab thoob qaabntuj.

Nwg yog tug:

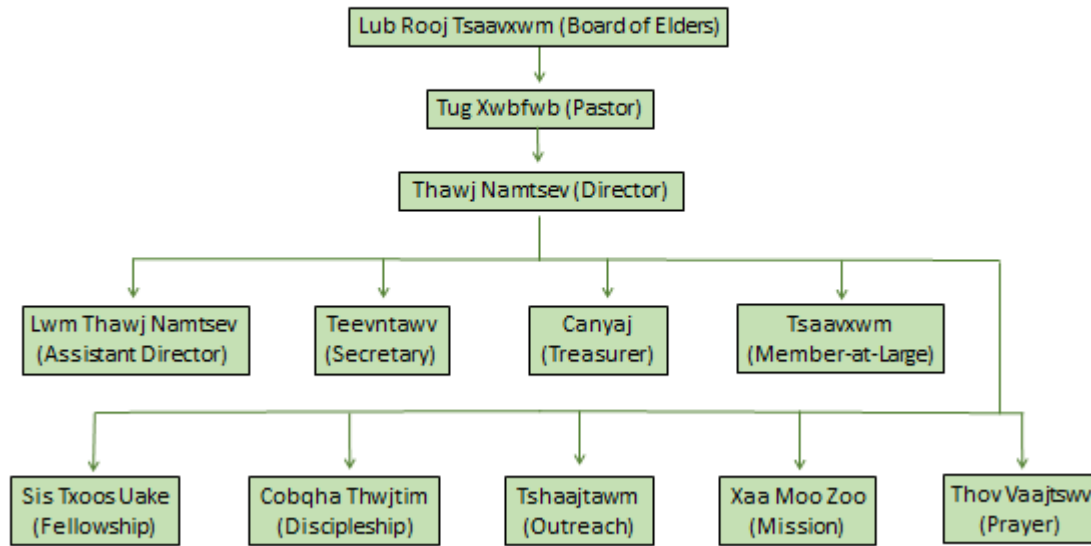
- Txhawb nqaa kev thov Vaajtswv hab rhawv kuas muaj kev thov Vaajtswv nruab nraab ntawm cov namtsev.
- Npaaj cov nqai rua kev thov Vaajtswv kws tej tug namtsev, pawgntseeg, KHN, KHNQS lossis lwm tug xaav kuas thov Vaajtswv rua, hab muab faib rua cov namtsev thov Vaajtswv.
- Rhawv kuas muaj kev ncaav cuag cov namtsev lug ntawm kev moog thov Vaajtswv rua puab, hab teem sijhawm rua kev moog thov Vaajtswv.
- Npaaj komtswj lossis nrhav tuabneeg coj kev thov Vaajtswv txhua zag kws muaj moog thov Vaajtswv, hab suav saib cov moog koom muaj pistsawg leej.
- Ua dlejnum lawvle lub rooj tsaavxwm pumzoo lossis lawvle thawj namtsev tsocai rua ua.

Huv qaab nuav yog ob dlaim dluab qha txug pawgntseeg hab pawg namtsev lub cev

Pawgntseeg Lub Cev (Church Organizational Structure)



Pawg Namtsev Lub Cev (Local AWM Organizational Structure)



Cov dlejnum teev rua huv qaab cov meejmom sau toj nuav, tsuas yog qha lossis taw qee yaam dlejnum kuas cov tsaavxwm paub ua dlejnum xwb. Tsi taag le ntawd, muaj qee yaam dlejnum ntawm cov meejmom muaj ntsiv zoo ib yaam, tabsis nyag ua nyag dlejnum lawvle lub sijhawm npaaj ua ntawm tej lub meejmom. Cov dlejnum yuav ua huv tej pawg namtsev, nyob ntawm lub rooj tsaavxwm huv pawg namtsev npaaj hab ua lawvle lub rooj tsaavxwm huv pawgntseeg pumzoo.

*Nqhua hu pawg namtsev sau kevcai tswjfw m lossis kaabke dlha dlejnum ntxiv, kws tsi cuam tshuam rua cov kevcai tswjfw m ntawm tej pawg namtsev lawvle **Tej Pawg Namtsev Kevcai Tswjfw m Phaaj IX (Local Policy)** lug siv nyob rua ntawm pawg namtsev, kuas yoojyim rua kev dlha dlejnum hab kuas dlejnum tav moog rua qhov zoo.*