


# STAMP MINISTRY GUIDELINES

January 2020

Thank you for the stamps you send to this ministry. The income generated from this ministry goes to support the preparation, publishing and distribution of a new Spanish language curriculum for Sunday Schools. More than 50 lesson series have been published and are being used in churches of 40 different denominations and missions in 19 different Spanish speaking countries in South America, Central America, Spain and even the USA.

A DVD is now available to help in sharing the Stamp Ministry with your church, family and friends. A donation of \$5.00 for the DVD is being asked to help offset the cost of production and postage.

## GENERAL INSTRUCTIONS:

1. Carefully trim the stamps. When possible, leave a border around the stamp of 1/4" to 1/3"  
**Please do not remove any stamps from the paper BUT**, if stamps are already off paper we have a buyer for them.
2. Sort the stamps and place in **plastic bags**. **Do not use paper clips, rubber bands or saran wrap around the stamps.**
3. Unless specified, the categories below refer to United States stamps and should be sorted as follows:
  - o Small common together, 1/2 cent through current postal rate, including Hanukkah, Kwanza, EID, Purple Heart and Celebrate
  - o Christmas (which includes Winter birds and Winter berries)
  - o High value - anything over the current first class postal rate together
  - o Air Mail together
  - o Presorted, pre cancelled, nonprofit and bulk rate  
**(these are glued on stamps not information printed on paper)**
  - o Large commemoratives (usually rectangular or larger squares)
  - o Express stamps \$2.90, \$8.75, \$9.95, \$10.95 and up
  - o Priority stamps \$2.40, \$2.90 and up
  - o Love stamps together
  - o Separate foreign stamps into ON paper and OFF paper
  - o Canadian stamps together
  - o Uncancelled stamps
  - o Computer generated postage (with an illustration or a photograph) (with a black mosaic like )  
**- computer stamps with a Christmas motif belong with computer stamps NOT in Christmas**
  - o Stamps that are pre-printed on envelopes
  - o **Damaged stamps**
  - o Stamps off paper
  - o **Please DO NOT send metered mail nor the permit number of businesses and organizations**
  - o We no longer soak stamps off paper. **Colored envelope paper is not to be separated out.**

## IMPORTANT:

**Enclose a self-addressed stamped envelope with name and address inside the top of the package** so we can acknowledge receipt of the stamps.  
An email address and / or a phone number would enable us to contact you if the need arises.

May the Lord bless each of you Stampers!

Alliance Stamp Ministry  
15000 Shell Point Boulevard  
Fort Myers, FL 33908

(239) 433-7910

**If you can LICK it or STICK it we can use it!**



## TERRIFIC NEWS

The ALLIANCE STAMP MINISTRY is working on their SECOND MILLION!

July 2018, the STAMP MINISTRY, with God's help, reached \$1,000,000.00

All of these funds have supported the spread of the Gospel in Spanish by radio waves and the printed page since 1972.

## CHANGES for 2020

(1) Please **DO NOT SEND** metered mail:

PRESORTED  
FIRST CLASS



PITNEY BOWES  
US POSTAGE  
\$00.40<sup>3</sup>  
JUL 11 2017  
ZIP 08095  
000496  
21 3007829

Presort  
First Class Mail  
CombinaaPrice



U.S. POSTAGE PITNEY BOWES  
ZIP 14905 \$ 000.45<sup>3</sup>  
02 4W  
0000345387 APR 14 2017

(2) Please **DO NOT SEND** permit number postings:

PS LIGHTWEIGHT  
US POSTAGE PAID  
UPS MAIL INNOVATIONS  
eVS

PRESORTED  
FIRST CLASS MAIL  
U.S. POSTAGE PAID  
AKRON OH  
PERMIT NO. 513

Presort  
First-Class  
U.S. Postage  
**PAID**  
Columbia Sta., OH  
Permit #4

PRSRT STD  
U.S. POSTAGE  
**PAID**  
MUTUAL OF  
OMAHA

NONPROFIT ORG.  
U.S. POSTAGE  
**PAID**  
PERMIT #501  
FREDERICKSBURG, VA

It costs you more in postage to send these items. They are of little value to our dealers.

We need the Pre Sorted, Non Profit, Bulk Mail and Pre Sorted Standard STAMPS stuck on the envelopes.

(3) We continue to make use of **DAMAGED STAMPS!**

(4) Dealers still require a border of 1/4 to 1/3 inch of paper around the stamp

If the border is less than that, the stamp can still be sold, but at a lower price.

The stamps are sold by the pound and if you are cutting too close to the stamp, you are cutting off some of our profits.

(5) We still have a market for regular postage that is **UNCANCELLED**.

**Thank you for your faithful support of this – God's Unique Ministry!**

If you can LICK IT or STICK IT we can use it!

# Further Clarification



These are  
LOVE stamps

This is a COMMON stamp.



4946-49  
Rudolph the Red-Nosed Reindeer



4941-44  
Winter Fun

These two stamps belong in CHRISTMAS  
as do the Evergreen stamps.



Though not small nor  
square, it is COMMON



We have a category for UNCANCELLED stamps (strips + singles)



NONPROFIT ORGANIZATION  
U.S. POSTAGE PAID  
EASTER SEALS

We want these →

Not this ↗

We want these ↗

Not this ↗



All COMPUTER stamps with this design go together even if they look like Christmas.



These stamps are similar but different!

This is a LOVE stamp



The next two are High Value



76¢

These four stamps have no price marked on them.



22¢



71¢



71¢



93¢

These Postcard stamps go into COMMON.



These 39¢ snowflakes belong in CHRISTMAS



Though similar, this is a PRESORTED STANDARD stamp



These modernistic snowflakes belong in CHRISTMAS!



Hope this information helps!

25 copies

All of the "Pets" belong in Common, as do these "Colorful Celebrations"



The 20 Pets commemorative forever stamps issued August 2.



The 10 Colorful Celebrations commemorative forever stamps, issued June 3, in a double-sided pane of 20 (convertible booklet format).

These four "Songbirds in the Snow" belong in Christmas.

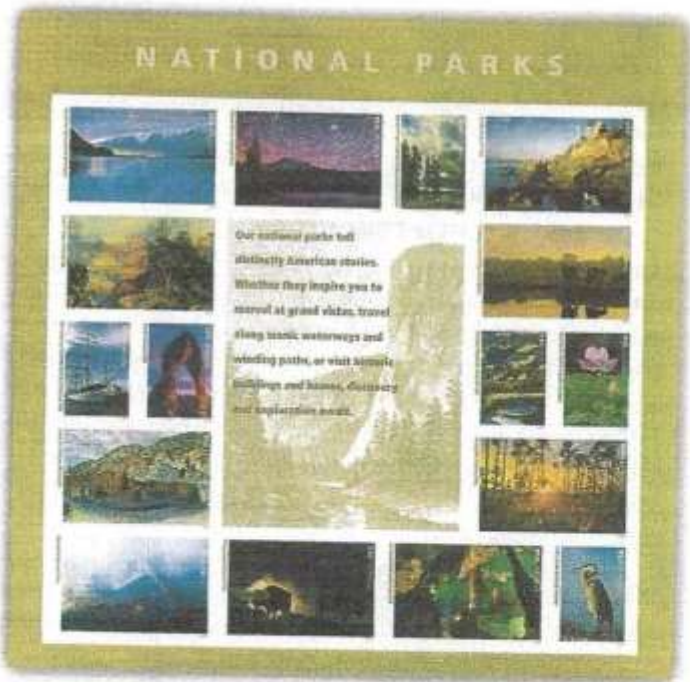


The four Songbirds in Snow commemorative stamps.





The five Soda Fountain Favorites commemorative forever stamps issued June 30 in a pane of 20 (convertible booklet format).



The 16 National Parks Centennial commemorative stamps.

Both the "Soda Fountain Favorites" and the "National Parks" have both large and small stamps in the series. All of these stamps belong in Commemorative.



The six United States Classics Forever commemorative forever stamps issued June 1 in New York City in a souvenir sheet format.



Six classic United States stamps used as inspiration for the new stamp issue. Images courtesy of the APS Reference Collection.

These "new" "old" stamps belong in Common.

# A few more Stamps that need Clarification!

These two stamps are not LOVE!



They belong in Common!

This series of Winter Birds goes in Christmas



These "Celebrate" stamps belong in Common!



We are putting this series of "WINTER BERRIES" in Christmas.



We no longer have a buyer for our uncancelled 1¢ (one cent) stamps.

Dealers are still buying the cancelled 1¢ (one cent) stamps found in the Common category.



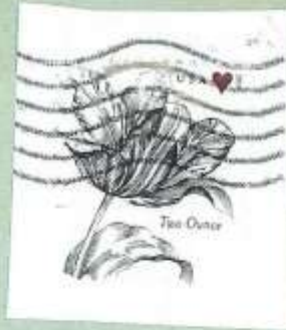
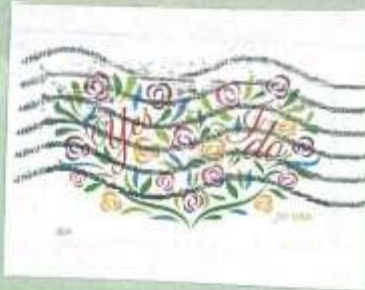
# Stamps Without a Money Value Shown

## Additional Ounce

It is worth 15¢

Its size makes it

Common



Stamps marked "Two Ounce" range from 70¢-76¢  
They belong in "High Value"

"Three Ounce" stamps  
range from 89¢-93¢  
They go into "High Value".



These stamps  
range from  
68¢ and up.

"Non Machineable Surcharge"  
belong in "High Value."